

**Anti-Ferritin, Light Chain (FTL) (Microglia Marker) Antibody**  
**Mouse Monoclonal Antibody**  
**Catalog # AH13251****Specification****Anti-Ferritin, Light Chain (FTL) (Microglia Marker) Antibody - Product Information**

Application	WB, IHC-P, IF, FC
Primary Accession	<a href="#">P02792</a>
Other Accession	<a href="#">433670</a>
Reactivity	Human
Host	Mouse
Clonality	Monoclonal
Isotype	Mouse / IgG2b
Calculated MW	20020

**Anti-Ferritin, Light Chain (FTL) (Microglia Marker) Antibody - Additional Information****Gene ID** 2512**Other Names**

Ferritin L chain; Ferritin L subunit; Ferritin light chain; Ferritin light polypeptide; FTL; LFTD; NBIA3

**Application Note**

WB~~1:1000  
IHC-P~~N/A  
IF~~1:50~200  
FC~~1:10~50

**Format**

200ug/ml of Ab purified from Bioreactor Concentrate by Protein A/G. Prepared in 10mM PBS with 0.05% BSA &amp; 0.05% azide. Also available WITHOUT BSA &amp; azide at 1.0mg/ml.

**Storage**

Store at 2 to 8°C. Antibody is stable for 24 months.

**Precautions**

Anti-Ferritin, Light Chain (FTL) (Microglia Marker) Antibody is for research use only and not for use in diagnostic or therapeutic procedures.

**Anti-Ferritin, Light Chain (FTL) (Microglia Marker) Antibody - Protein Information****Name** FTL**Function**

Stores iron in a soluble, non-toxic, readily available form. Important for iron homeostasis. Iron is taken up in the ferrous form and deposited as ferric hydroxides after oxidation. Also plays a role in delivery of iron to cells. Mediates iron uptake in capsule cells of the developing kidney (By similarity). Delivery to lysosomes by the cargo receptor NCOA4 for autophagic degradation and release of iron (PubMed: <http://www.uniprot.org/citations/24695223>)

target="\_blank">24695223</a>).

#### Cellular Location

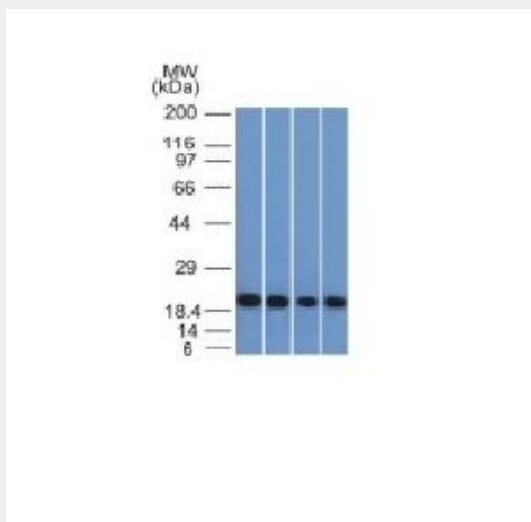
Cytoplasmic vesicle, autophagosome. Cytoplasm {ECO:0000250|UniProtKB:P29391}.  
Autolysosome {ECO:0000250|UniProtKB:P29391}

### Anti-Ferritin, Light Chain (FTL) (Microglia Marker) Antibody - Protocols

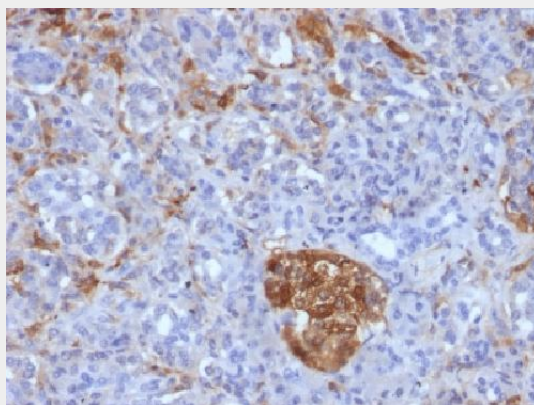
Provided below are standard protocols that you may find useful for product applications.

- [Western Blot](#)
- [Blocking Peptides](#)
- [Dot Blot](#)
- [Immunohistochemistry](#)
- [Immunofluorescence](#)
- [Immunoprecipitation](#)
- [Flow Cytometry](#)
- [Cell Culture](#)

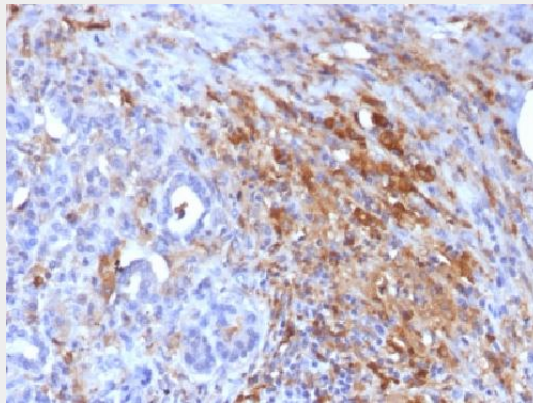
### Anti-Ferritin, Light Chain (FTL) (Microglia Marker) Antibody - Images



Western Blot of A431, HeLa, Liver and Testis Lysate using Ferritin, Light Chain Monoclonal Antibody (FTL/1386).



Formalin-fixed, paraffin-embedded Human Pancreas stained with Ferritin, Light Chain Monoclonal Antibody (FTL/1386).



Formalin-fixed, paraffin-embedded Human Pancreas stained with Ferritin, Light Chain Monoclonal Antibody (FTL/1386).

#### **Anti-Ferritin, Light Chain (FTL) (Microglia Marker) Antibody - Background**

Mammalian ferritins consist of 24 subunits made up of 2 types of polypeptide chains, ferritin heavy chain and ferritin light chain. Ferritin heavy chains catalyze the first step in iron storage, the oxidation of Fe (II), whereas ferritin light chains promote the nucleation of ferrihydrite, enabling storage of Fe (III). Light chain ferritin is involved in cataracts by at least two mechanisms, hereditary hyperferritinemia cataract syndrome, in which light chain ferritin is overexpressed, and oxidative stress, an important factor in the development of ageing-related cataracts.